

---

<b>1 System Requirements</b> .....	<b>2</b>
<b>2 Initial use</b> .....	<b>2</b>
<b>3 Configuration</b> .....	<b>3</b>
<b>3.1 Server and Password</b> .....	<b>3</b>
3.1.1 Server .....	3
3.1.2 Authorization Password .....	3
3.1.3 Password.....	4
<b>3.2 Start options</b> .....	<b>5</b>
3.2.1 Auto start .....	5
3.2.2 Automatically Windows User Login.....	5
<b>3.3 Display</b> .....	<b>6</b>
<b>3.4 Language and Currency</b> .....	<b>6</b>
<b>3.5 Code-Tickets</b> .....	<b>8</b>
<b>3.6 Payment Devices</b> .....	<b>9</b>
3.6.1 Virtual Device for Payment simulation.....	10
3.6.2 CCTalk Coin Acceptor.....	10
3.6.3 CCTalk Bill Validator .....	11
<b>3.7 Advanced options</b> .....	<b>13</b>
<b>3.8 Start Screen</b> .....	<b>14</b>
3.8.1 Language .....	14

# 1 System Requirements

Windows 2000/XP/Vista/7/8  
Pentium II, 500 MHz

## 2 Initial use

The TicketStation turns a computer into a ticket machine and allows your user to create a Prepaid-Code equal to the deposited amount. The guest can redeem this PIN-Code at SiteCharge Clients or wirelessly over Hotspot.

### **Installing and configuring the TicketStation**

Install TicketStation on a Windows computer. TicketStation will be automatically inserted to the exemption list of the firewall . If this is not possible, you will have to allow Ports-Address 7468 and 7469, and "TicketStation.exe" and "TicketStationSC.exe" applications.

The TicketStation-configuration dialog will automatically be displayed after installation. You can enter the fixed IP address or hostname of the server, or Select the option "Find server automatically".

### **TicketStation starten**

Launch all TicketStation Client. The TicketStation-computer will automatically be added under TicketStation list in Server Manager. Right-click the client to call up the context menu.

## 3 Configuration

### 3.1 Server and Password

The screenshot shows the 'TicketStation configuration' window with the 'Server and Password' tab selected. The window has a blue title bar and a sidebar on the left with a tree view containing 'Configure TicketStation', 'Server and Password', 'Start options', 'Display', 'Language and Currency', 'Code Tickets', 'Payment Devices', 'Advanced', and 'Info'. The main area is divided into three sections:

- Select server:** Contains two radio buttons: 'Find server automatically' (selected) and 'Server runs on this computer'. Below them is a text input field labeled 'Server'.
- Authorization Password:** Contains a text box with the instruction: 'You need to specify a Authorization Password to secure your server from unauthorized ticket stations.' Below it is a password input field with asterisks.
- Key combination and password to close TicketStation:** Contains a text box with the instruction: 'You should always secure the TicketStation with a key combination and password to avoid access of unauthorized persons.' Below it is a text input field containing 'STRG + ALT + F8' and a 'New password' button.

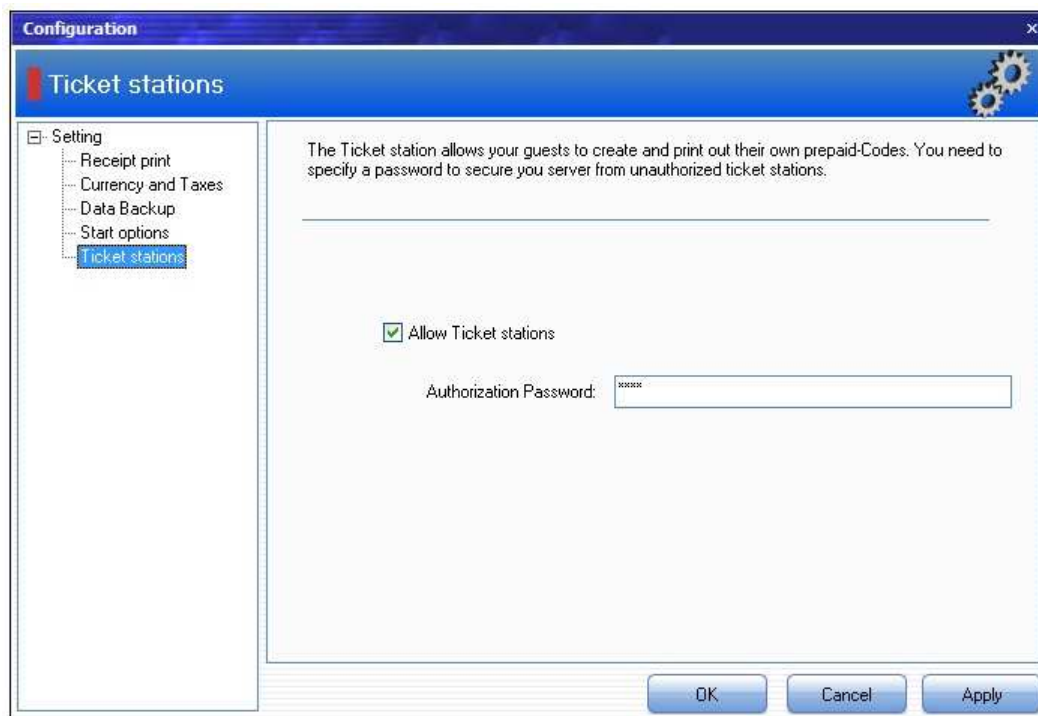
At the bottom of the window, there are buttons for 'Help', 'English' (with a flag icon), 'Cancel', and 'OK'.

#### 3.1.1 Server

Select the standard option "Find server automatically". You can enter the fixed IP address or hostname of the computer on which the Server launch.

#### 3.1.2 Authorization Password

You need to specify a Authorization Password to secure your server from unauthorized ticket stations.

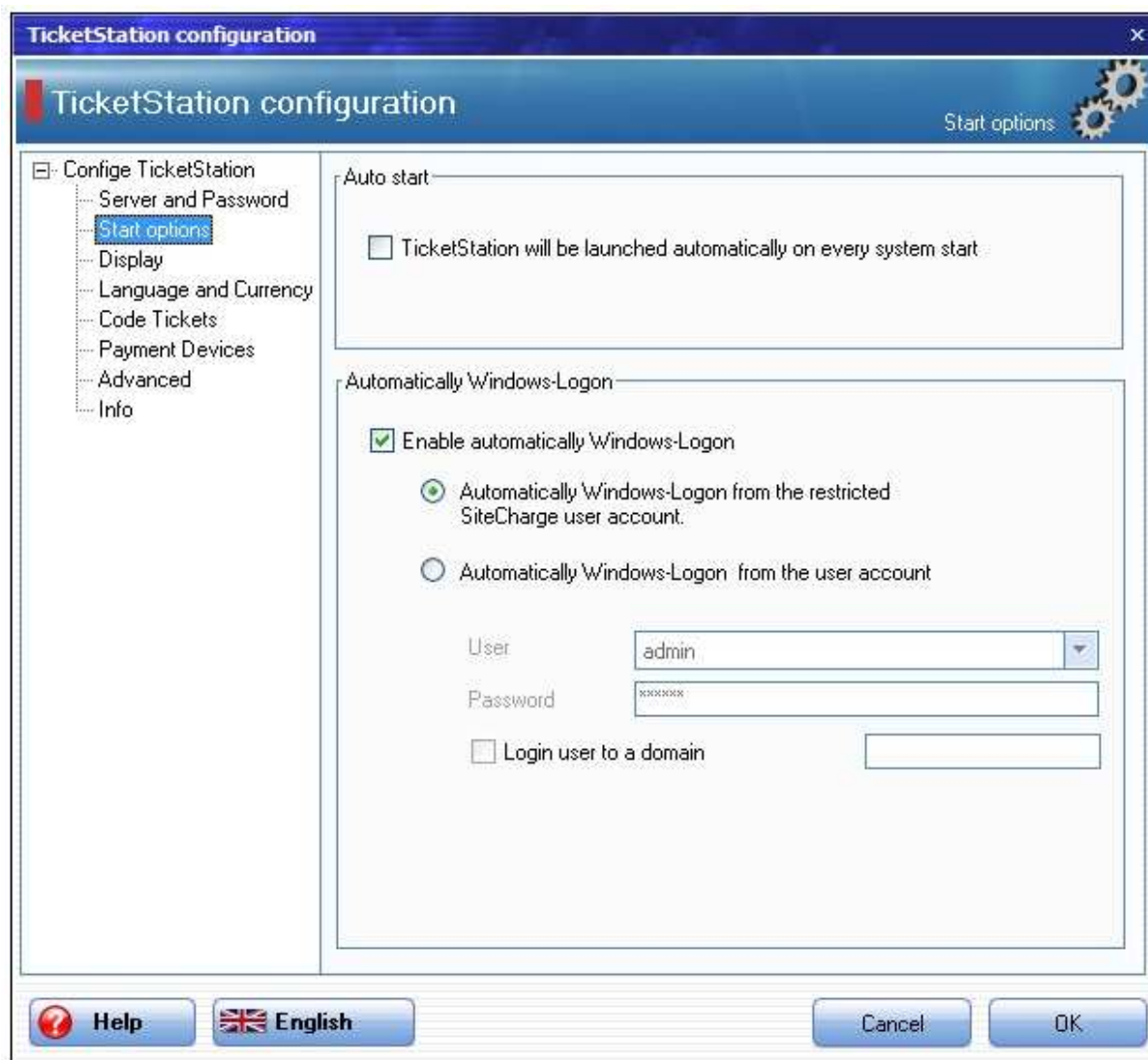


### 3.1.3 Password

You should always secure the TicketStation System dialog with a key combination and password to avoid access to unauthorized persons.

The default combination is: CTRL-ALT-F8

## 3.2 Start options



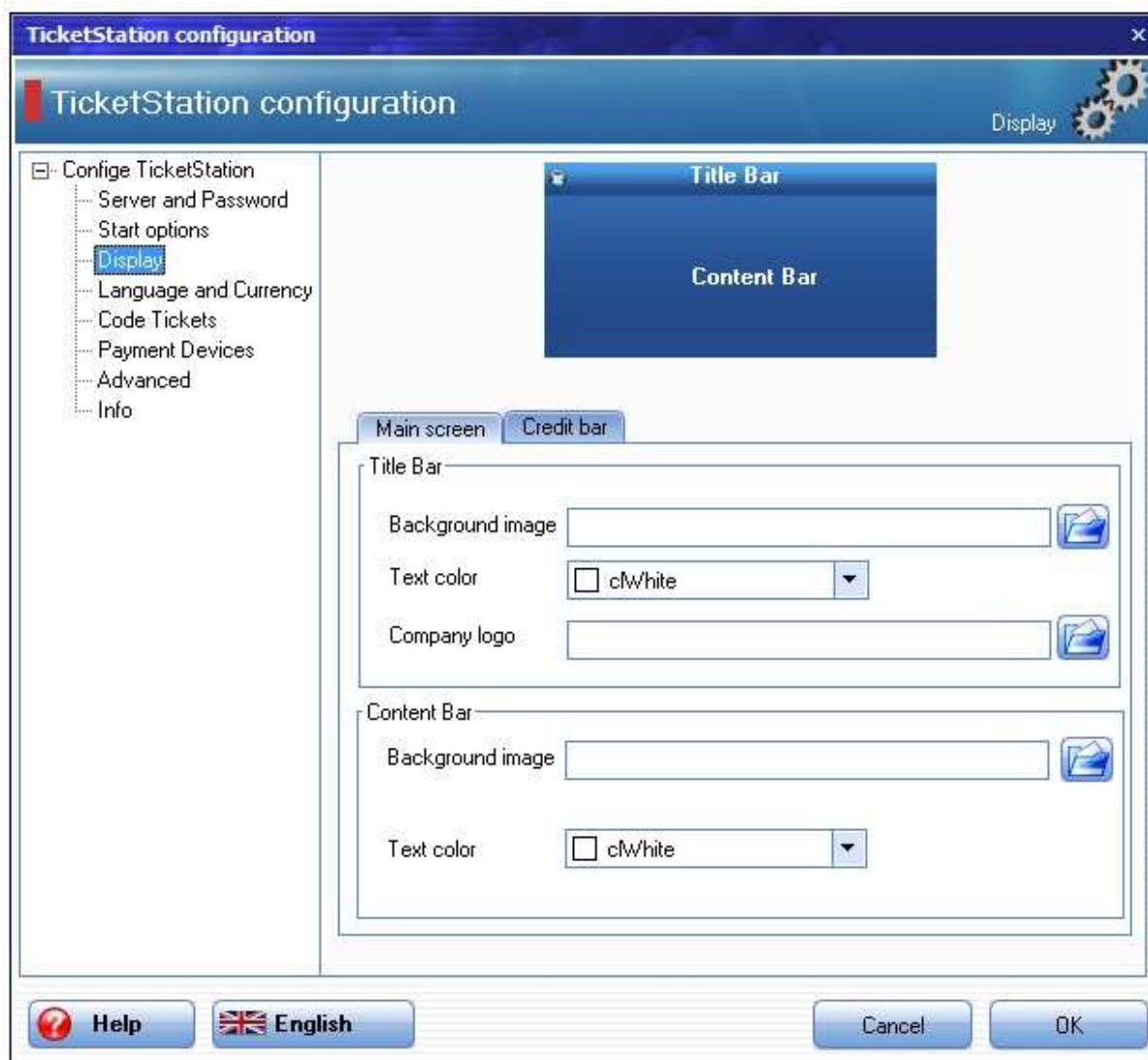
### 3.2.1 Auto start

Use this option to start automatically the TicketStation software after every start of the computer.

### 3.2.2 Automatically Windows User Login

Use this option when the restricted SiteCharge or selected windows user account will automatically be logged after every start of the computer.

### 3.3 Display



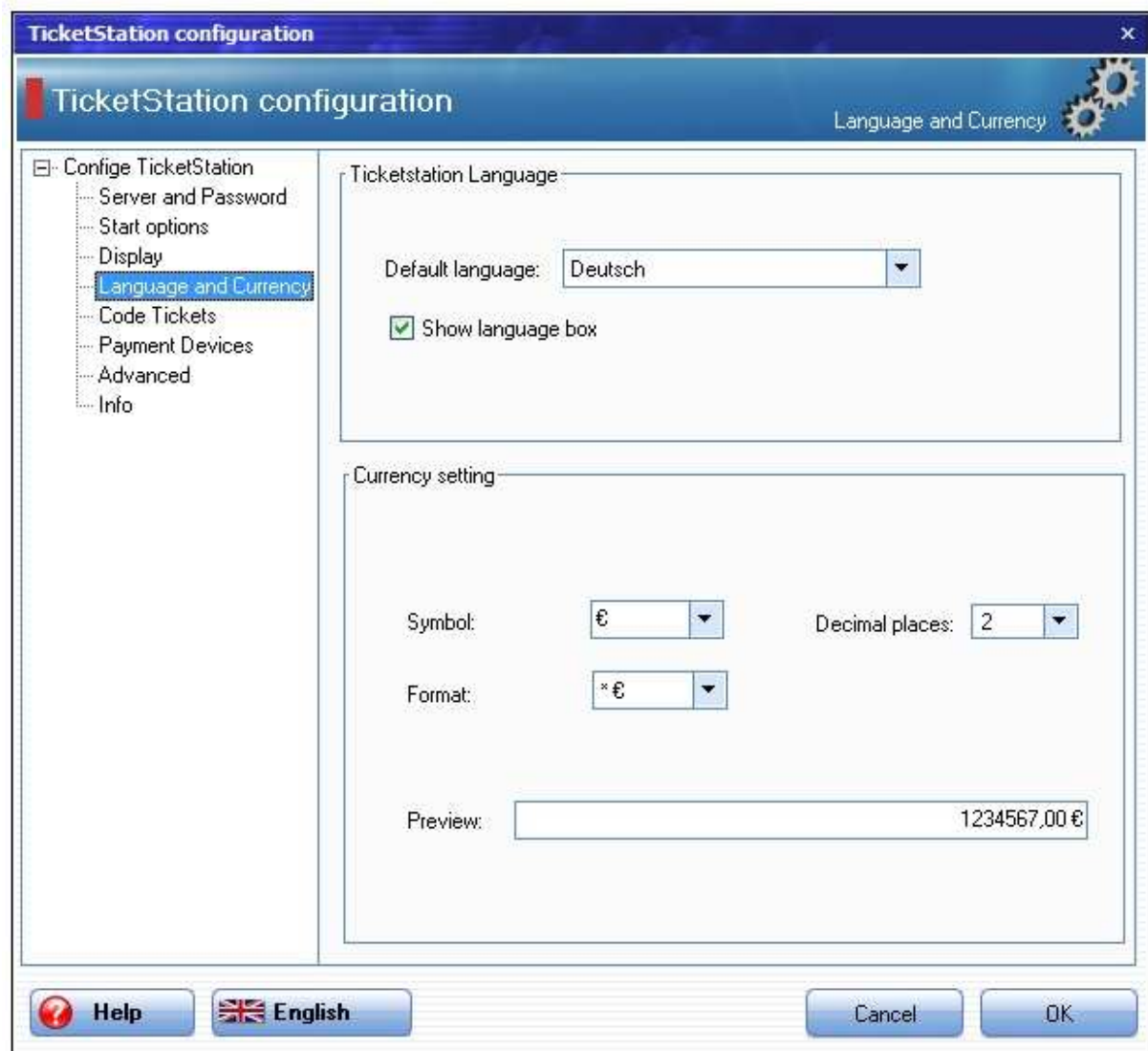
#### Background image

Allows setting of the Client's logon screen and title bar background with a picture

#### Company logo

Use this option to display your company logo.

### 3.4 Language and Currency



**Default language:** Select a standard language for your ticketStation

**Show language box:** Use this function to allow a user to change the language

**Currency setting:** Enter the currency symbol and adjust how many decimal places are displayed.

### 3.5 Code-Tickets

The screenshot shows the 'TicketStation configuration' window with the 'Code Tickets' section selected in the left-hand menu. The main area is divided into two sections: 'Receipt informations' and 'Print options'.

**Receipt informations:** This section is titled 'Enter your company informations for receipt Codes'. It contains two text boxes:

- Receipt header:** Cafe LaVazza  
SteinfuterStr 77  
48147 Münster  
Tel: 0251-12345678
- Receipt foot:** Vielen Dank für Ihren Einkauf  
Besuchen Sie uns unter:  
<http://www.myhotspot-software.com>  
Öffnungszeiten: 09:00 bis 23:00

**Print options:** This section is titled 'Select a default printer which the created prepaid codes can be printed'. It contains:

- Default printer:** A dropdown menu with 'PDFCreator' selected.
- Receipt width (mm):** A text input field containing '57' followed by '(mm)'.

At the bottom of the configuration area, there are two buttons: 'Print test Code' and 'Code preview'. The bottom of the window features a 'Help' button with a question mark icon, a language selector for 'English' with a flag icon, and 'Cancel' and 'OK' buttons.

Enter your company informations for receipt Codes (Receipt Header and Receipt Foot) and Select a default printer which the created prepaid codes can be printed

#### Example:



Cafe LaVazza  
SteinfuterStr 77  
48147 Münster  
Tel: 0251-12345678

---

**Code:      bfw6igjg21**

**Amount:    1,50 €**

---

Viellen Dank für Ihren Einkauf  
Besuchen Sie uns unter:  
[http://w w w .myhotspot-softw are.com](http://www.myhotspot-softw are.com)  
Offnungszeiten: 09:00 bis 23:00

### **3.6 Payment Devices**

TicketStation supports connections of unencrypted ccTalk Coin acceptor and Bill validator. The TicketStation was successfully tested with Coin Acceptor EMP 800.14 USB (WhBerlin) and Bill Acceptor NV10 USB (Innovative Technology Ltd (UK)).

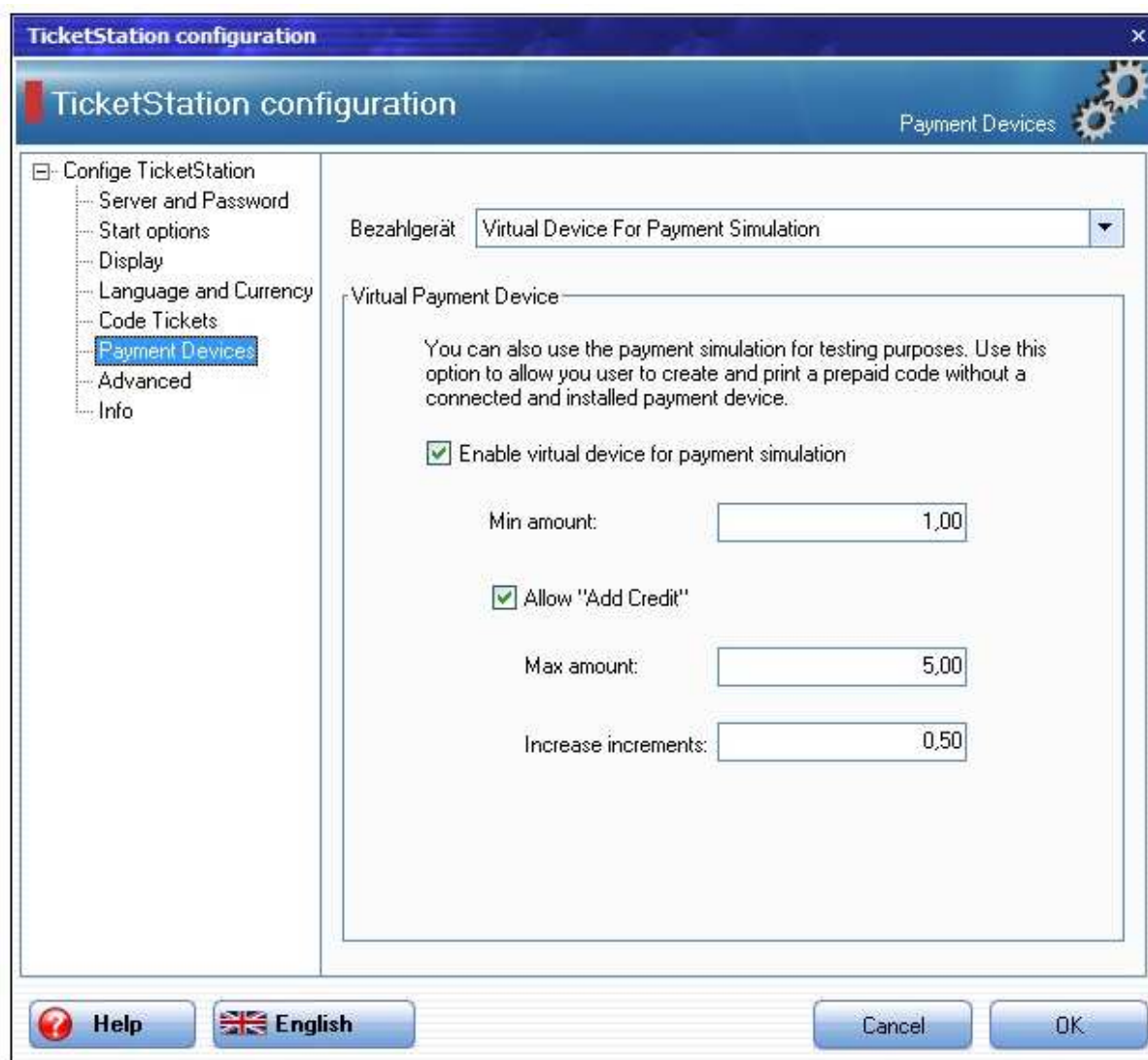
**EMP-800.14 USB:** Please download the driver from our website and follow the instructions:

[http://www.my-cybercafe.com/downloads/emp800\\_driver.zip](http://www.my-cybercafe.com/downloads/emp800_driver.zip)

**NV10 USB:** Please download the driver from our website and follow the instructions:

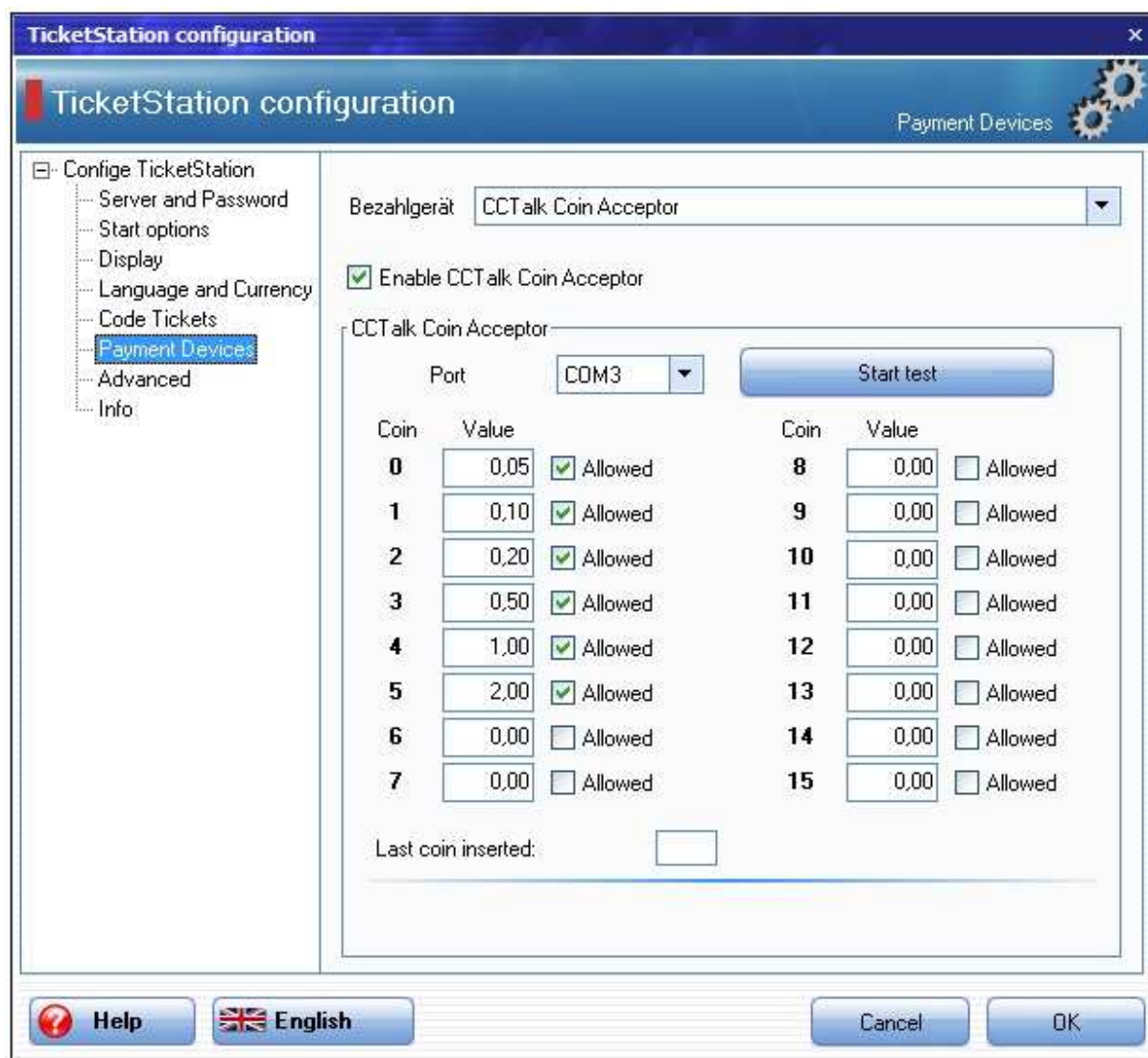
[http://www.my-cybercafe.com/downloads/bv\\_driver.zip](http://www.my-cybercafe.com/downloads/bv_driver.zip)

### 3.6.1 Virtual Device for Payment simulation



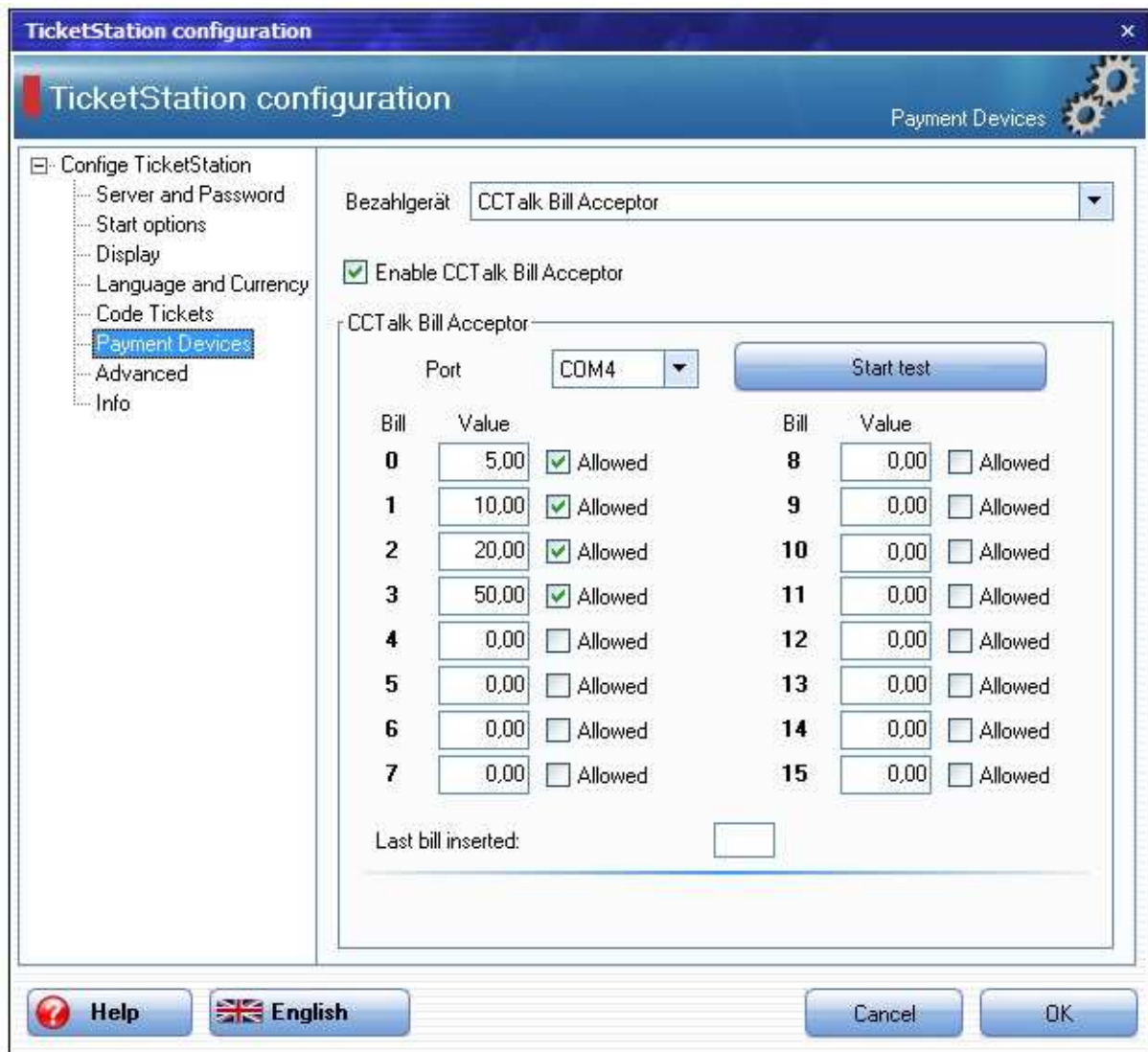
You can test the functionality of TicketStation or allows your guests to create and print a Prepaid-Code without having a payment device

### 3.6.2 CCTalk Coin Acceptor



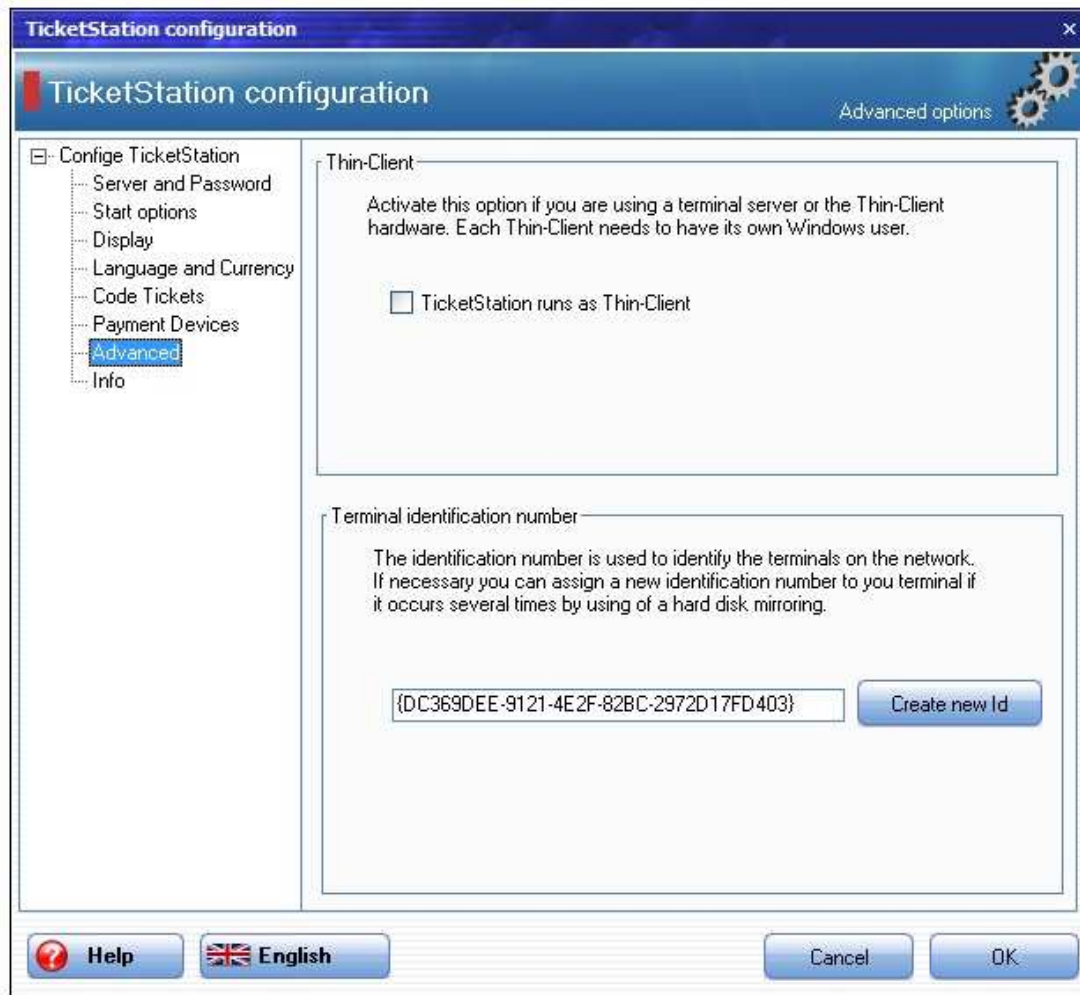
Select the COM-port and Click on "Start test". If the coin acceptor is successfully connected, insert the coins that you want to configure. Enter the value of this coin in the selected field and select the option "Allowed"

### 3.6.3 CCTalk Bill Validator



Select the COM-port and Click on "Start test". If the Bill Acceptor is successfully connected, insert the bills that you want to configure. Enter the value of this bill in the selected field and select the option "Allowed"

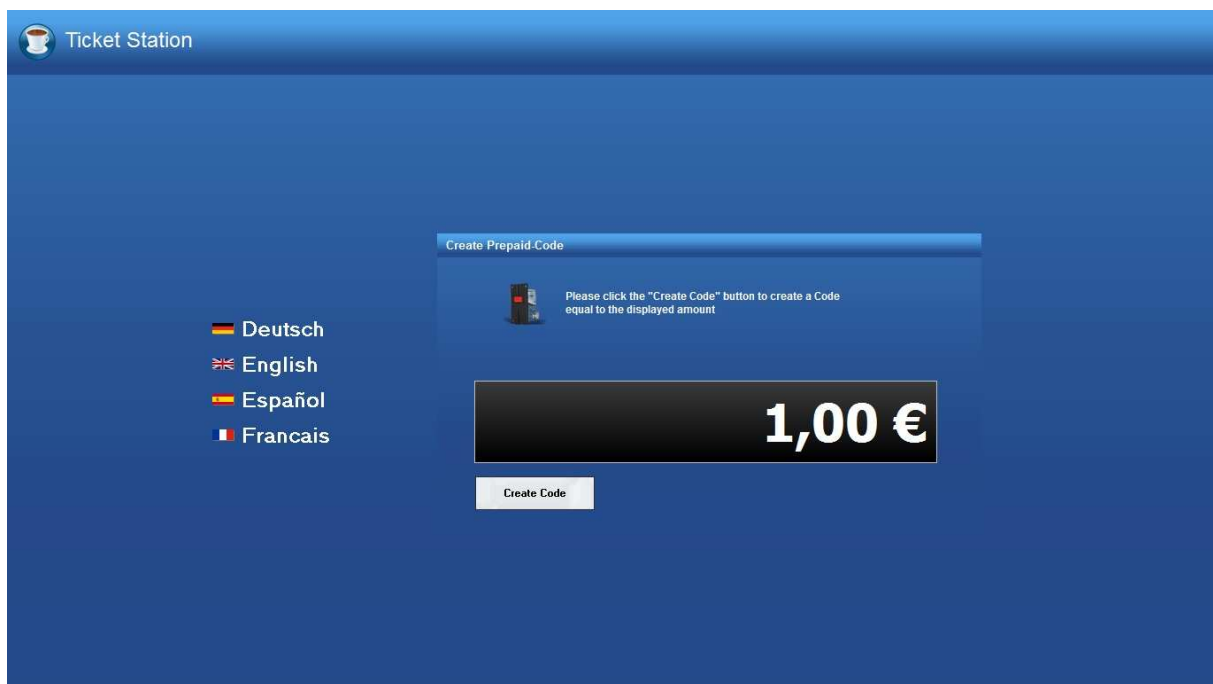
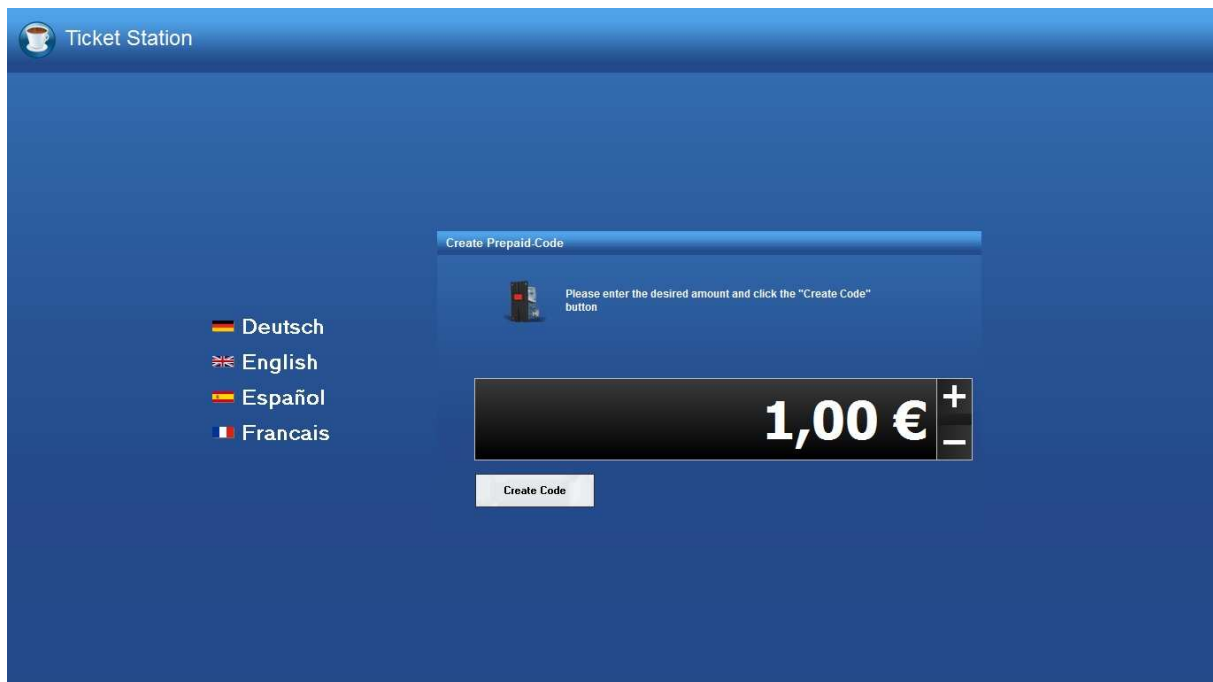
### 3.7 Advanced options



**Thin-Client:** Activate this option if you are using a terminal server or the Thin-Client hardware. Each Thin-Client needs to have its own Windows user.

**Terminal identification number:** The identification number is used to identify the terminals on the network. If necessary you can assign a new identification number to you terminal if it occurs several times by using of a hard disk mirroring.

## 3.8 Start Screen



### 3.8.1 Language

By clicking on any of the displayed flags the language for the TicketStation can be changed. the language settings will be reset to the standard language that has been defined in the Policies Options at the Server after 30 seconds inactivity..